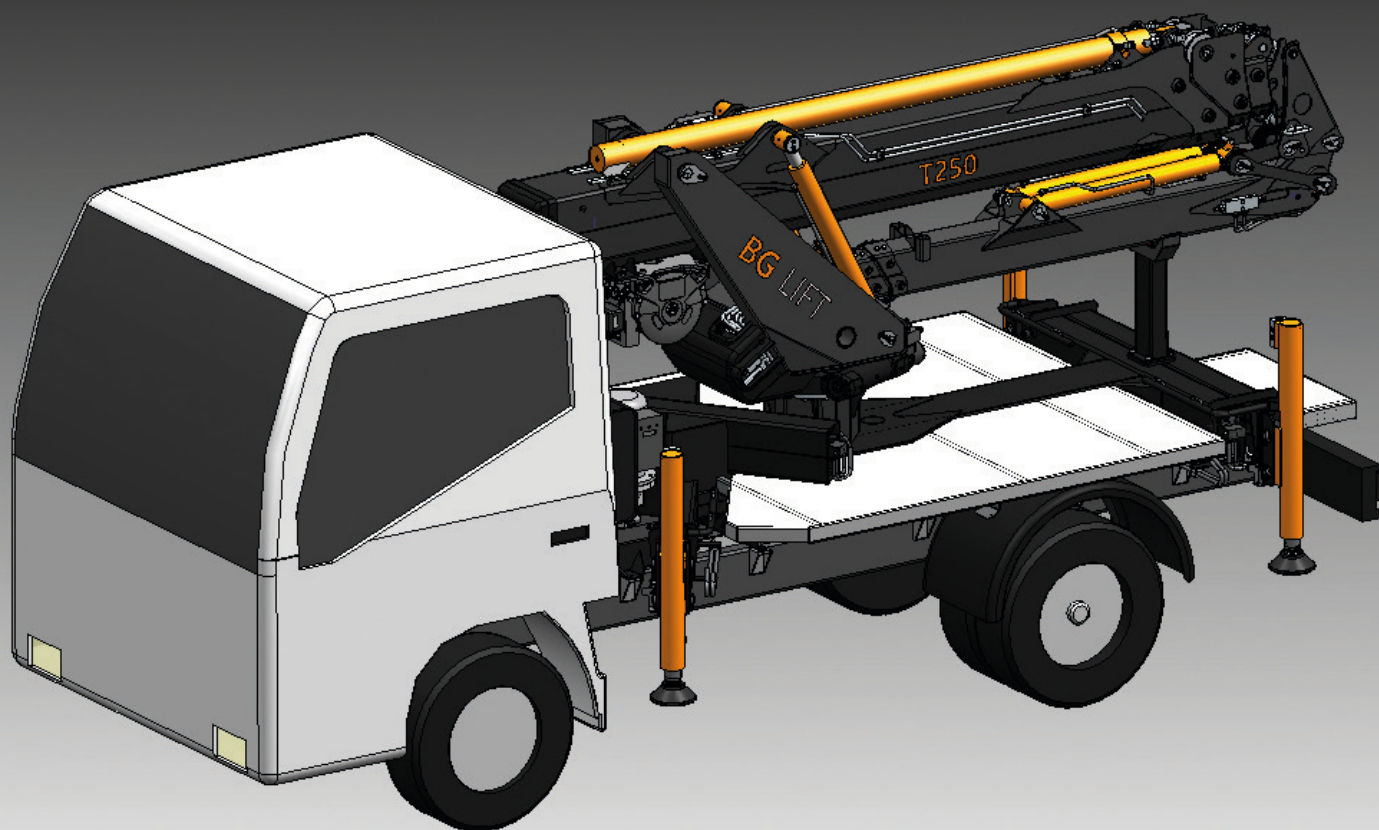


**T 250**

**BGLIFT**



La Massima Potenza di Sollevamento  
su **VEICOLO PATENTE B**

The Max Power Lifting  
on **3,5 TON TRUCK**



via Lionello Fiumi 22  
37010 Cavaion Veronese (VR) ITALY



[www.bglift.com](http://www.bglift.com)

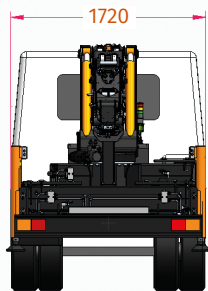
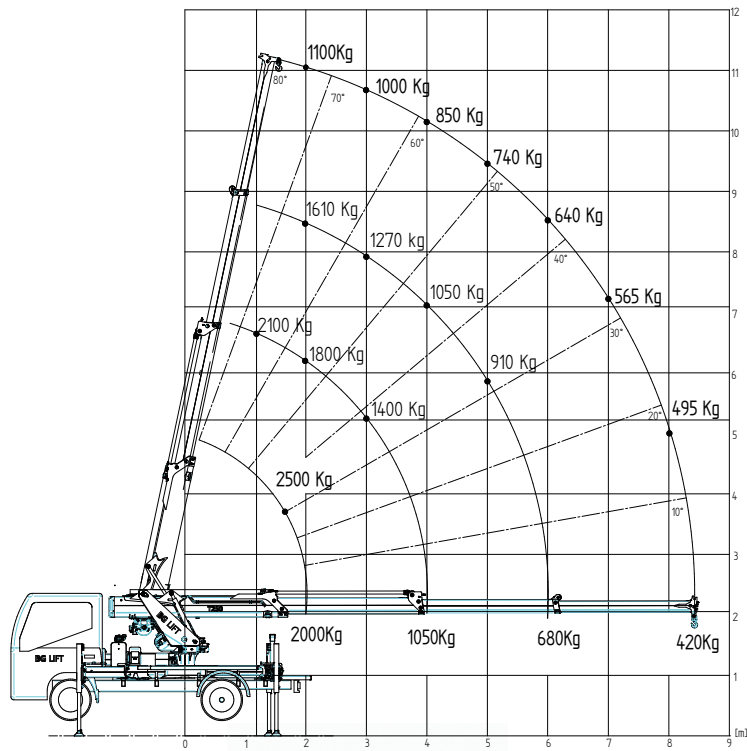


tel +39 045 6260100  
fax +39 045 6260106

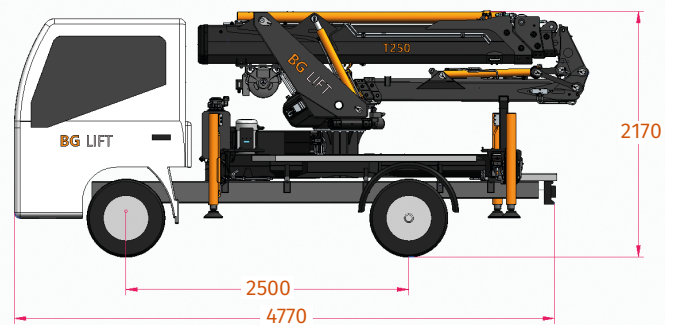
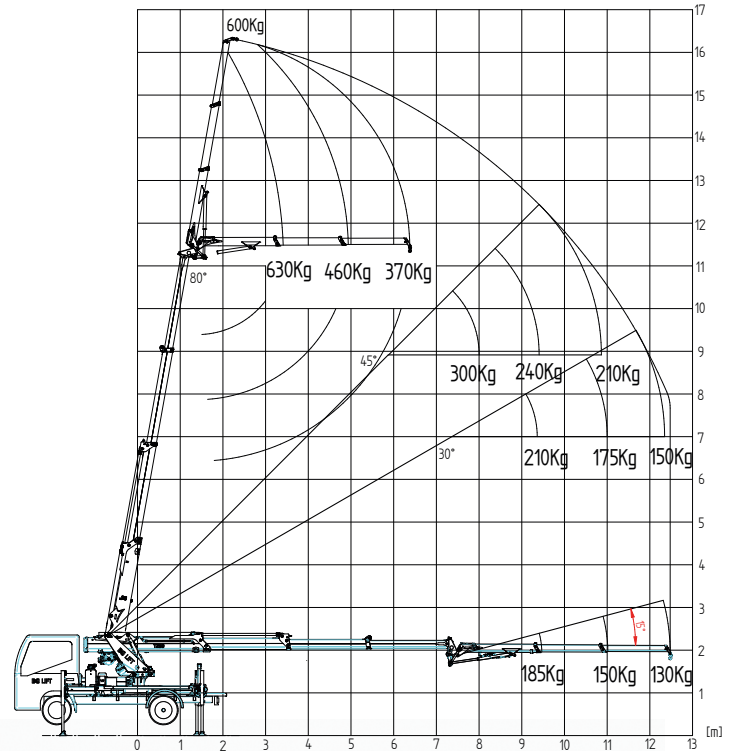


[info@bglift.com](mailto:info@bglift.com)

## T 250



## T 250 + JIB



### CARATTERISTICHE TECNICHE / TECHNICAL DETAILS

Veicolo/Truck	P.T.T./G.V.W.	3500 kg
	Standard emissioni/Standard Emission	EURO 6
Carico massimo gru/Max capacity	Carico/Load	2500 Kg/1.5 m
Raggio massimo di lavoro/Max Outreach	Max	8,43 m
Raggio massimo di lavoro con jib idraulico (optional) Max Outreach with hydraulic jib (optional)	Max	12,85 m
Altezza massima del braccio/Max Hook Height	Max	11,00 m
Altezza massima del braccio con jib idraulico (optional) Max Hook Height with hydraulic jib (optional)	Fino a/UP to	16,30 m
Angolo di rotazione/Slewing Angle	Gradi Max/Degrees Max	270°
Argano (optional) Winch (optional)	Tiro in diretta/First Layer Pull	1000 kg
	Lunghezza fune/Rope Length	65 m
	Velocità in tiro diretto/Speed in direct Pull	47 m/min
Radiocomando/Radio Remote Control		SCANRECO Can-Bus con Display
Limitatore di carico/Load Limiting Device		Controllata da computer/Computer Controlled
Stabilizzazione/Stabilization		H+H
Pesi/Weights	Gru standard/Standard Crane	3150 kg
	Jib	210 kg
	Motore elettrico/Electrical Motor	40 kg
	Argano/Winch	65 kg
Motore elettrico (optional) Electrical motor (optional)	Potenza Max/Max Power	2,2 kw
	Alimentazione/Power Out	220 V AC 60 Hz
Optional principali Main optionals	Argano idraulico da 1000 Kg Gancio ribassato Carrucole per tiro triplo Fari di lavoro Jib idraulico Over Line con operatività di 195° Motore elettrico 220 V monofase con inverter Olio idraulico biodegradabile	1000 Kg Hydraulic Winch Lowered Hook Third line Pulleys LED Working Lights Hydraulic Jib Over Line with opening UP to 195° Single Phase Electric Motor with Inverter Green Oil